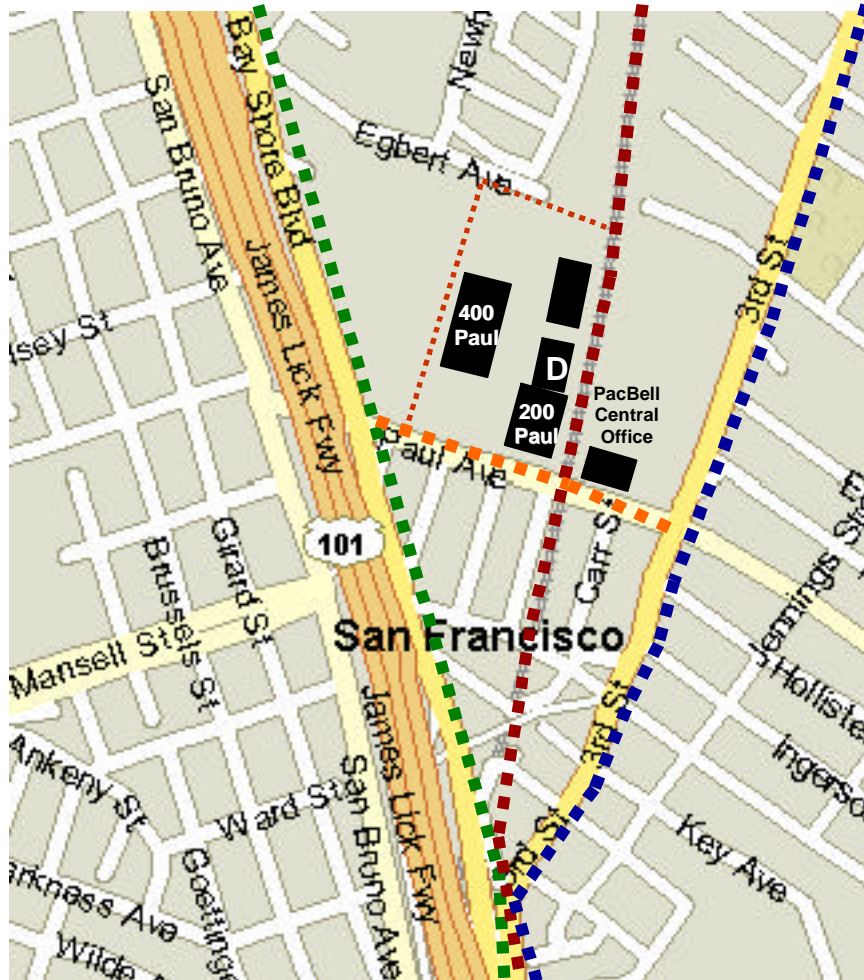


All buildings are connected via diverse conduit pathways, multiple meet-me-rooms and extensive riser capacity





■■■■■■■■■■ **Bayshore Fiber Route**

AT&T, Time Warner (GST), PacBell/SBC, Worldcom (MFS), Level 3, MFN, RCN, XO Communications, Williams

■■■■■■■■■■ **SP Railroad Right-of-way**

Sprint Communications, Qwest, Worldcom

■■■■■■■■■■ **3rd Avenue Fiber**

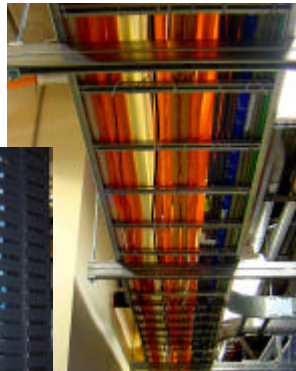
Genuity, PacBell/SBC, Worldcom/MFS, Level 3, Qwest

■■■■■■■■■■ **Paul Avenue Fiber**

AT&T, Time Warner (GST), PacBell/SBC, Worldcom (MFS), Level 3, MFN, Qwest, RCN, XO Communications,

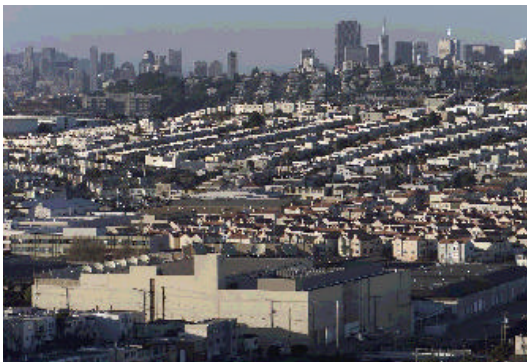
AT&T
Adelphia
Cogent
eXchange Colocation
Global Photon
Level 3
MCI Worldcom
MFN
MFS
Pacific Bell/SBC

Qwest/Qwest Link
RCN
Silicon Valley Power
Telseon
Time Warner
Tycom
Universal Access
Williams
XO Communications





San Francisco: 15 mW of 12 kV power



eXchange



Wave
Exchange

